



**Tyndale**  
CHRISTIAN SCHOOL

# Staff Recruitment

Information for Applicants

### Our Vision

Partnering with parents in a covenant community, nurturing servant-hearted students with an understanding of Christ's saving grace while providing academically rigorous education in a safe and caring environment.

### Our Mission

To equip students to be disciples of Jesus through Christ-centred Biblical education.

### Our Motto

Serve the Lord the gladness.



**Note:** Use the toggle on the top right of each page to be redirected back to the Contents page.

# Contents





# Message from the Principal



Rebecca Hall

Welcome to Tyndale Christian School. Tyndale is a preschool to Year 12 co-educational school located in Blacktown, Sydney. At Tyndale we believe that God has given parents the responsibility for the nurture of their children according to the Word of the Lord. Tyndale is therefore committed to partnering with parents in the Christian education of their children by equipping students to be disciples of Jesus through Christ-centred Biblical education.

We affirm the Biblical truth that every person is made in the image of God and are therefore committed to providing a holistic education where each child has the opportunity to identify and develop their God-given talents. We seek to develop character that supports our students to bring glory to God in all spheres of life and be the people God has created them to be.

Tyndale's Biblical framework for teaching and learning enables students to be seekers of Biblical truth who understand that their identity is in Christ. Our experienced and dedicated Christian staff are committed to providing quality education where the word of God is taught faithfully and a biblical worldview is integrated into all aspects of school life. Through the work of the Holy Spirit and the faithful teaching of passionate and dedicated Christian teachers, our students are equipped to serve the Lord with gladness by serving others with love, justice and compassion. We invite excellent Christian staff to consider joining our team.



# About Tyndale Christian School

Tyndale's vision is to partner with parents in a covenant community to nurture servant-hearted students who have an understanding of Christ's saving grace. Tyndale values the partnership between church, home and school. We recognise that we are members of the body of Christ and as such, shoulder the responsibility of Christian education together.

The Tyndale community is founded on a reformed theological position and welcomes Christian parents from a wide variety of Christian denominations and many cultural backgrounds. The families and their students enrolled at Tyndale are comprised of 65 different ethnic backgrounds and represent around 100 Christian Churches.

Tyndale is passionate about the care, nurture and well-being of students as they move through Pre-School to Year 12.





**“Support  
structures  
that enable  
students to  
flourish...”**





# Our History

The Association for Christian Education of Blacktown Ltd was formed in 1958 by Christian people of Protestant persuasion. It was their intention to establish a school in which their children would be taught in a manner consistent with their understanding of the Bible. The School opened its doors in Kildare Rd, Blacktown in 1966, with 2 teachers and an enrolment of 32 students. By the end of 1968 the total enrolment was 75 students, and in 1971 the first Tyndale students left the School to attend local secondary schools.

In 1976 Tyndale Christian School ventured into Secondary Education, with planning underway to relocate the school facilities in order to allow for the anticipated growth. By 1979 the school moved to its current site on 58 Douglas Road and the first Year 12 class graduated in 1981. Tyndale's numbers continued to increase, and the school double streamed in 1982, while the building program continued, with new primary facilities and specialist secondary classrooms added that year.

Tyndale has been blessed with a committed, expert teaching and support staff, many of whom have been faithful to the vision of Christian education at Tyndale for many years. Mr Peter van der Schoor, Mr Spencer Warren, Mr Graham Smith, Mr Geoff Clarke, Mr George Glanville and Mr Jack Joyce have all contributed to the life and growth of Tyndale in their role as Principal. In 1993 Mr George Glanville, who had taught at Tyndale from 1981 to 1986, returned to serve as Principal. From 2009 until 2019 Mr Jack Joyce took over the leadership of the School. In 2020 our current Principal, Mrs Rebecca Hall was appointed.

The facilities at Tyndale Christian School continue to develop to keep pace with changes in curriculum and population growth:

- 1995 Opening of School Hall
- 2004 Completion of the TAS (Technology and Applied Studies) block (N Block)
- 2008 Opening of Prep service for 4-year-olds
- 2009 Introduction of Kids' Club, offering parents before, after and vacation care
- 2011 Completion of new library and multi-purpose hall (MP1 - MP3) plus Trade Training Centre adjoining to existing Hall comprising a commercial kitchen (L4) and Café (L3)
- 2015 New Administration and student services building incorporating purpose-built sick bay
- 2017 Senior school building (K1 - K9) including independent learning centre (ILC) and new drama classrooms and additional stage areas (L5)
- 2018 Prep facilities expanded to an Early Learning Centre catering for children from 3 years of age
- 2021 Kindergarten building including classrooms (B1 - B4) common area, withdrawal space, playground and covered outdoor learning area
- 2023 Building of new TAS, Science and Library buildings

In 2023 Tyndale Christian School has an enrolment of around 1,000 students from Prep to Year 12, with over 150 staff members. As we reflect on Tyndale's journey of over 55 years, we are grateful to those who dreamed of a school where Jesus Christ would be central to learning and mindful of the sacrifice and commitment of parents through the years. Most of all we are grateful to God for his faithful provision, his guidance and blessing as we seek to serve and honour Him through our educational endeavours.

**“our teachers are ready...  
to help them make sense  
of their world”**





# Governance

The Association for Christian Education of Blacktown Ltd provides education in which the authority and rights of parents in the education of their children are recognised and supported.

This is done in the following ways:

- Parents who are members of the Association, together with non-parent members, participate in the General Meetings of the Association to:
  - elect the Board of Directors from members of the Association
  - approve the annual budget
  - decide on major education policy matters for the school
- While the Board of Directors is responsible for the overall management, the Principal is in charge of the daily running of the school and is assisted in this by members of staff appointed by the Board. The Board is assisted in its governance tasks by a number of committees which the Board appoints from amongst Association members. One significant task undertaken by the Board is conducting Board interviews for prospective employees to ensure that all staff working at Tyndale are committed Christians with an active faith.
- Through regular Parent Information evenings Parent/Teacher/Student conferences, and open channels of communication, all parents are able to express their interests and concerns about the education of their children.
- Parents are encouraged to be involved in the educational activities of the school. Opportunities include involvement in Tyndale Connect (our parents and friends.group), providing support to Primary classes, providing support in exams, or supporting school functions, excursions and camps. For further information about this involvement please contact the School Office.
- Parents are also encouraged to be actively involved in working with staff to help students develop in their ability to learn, grow and serve.

The Parent-Controlled education practised at Tyndale is an indirect control exercised through the Board, the Committees and the Professional Staff appointed by the Board. Tyndale Christian School is a member of Christian Education National (CEN) and the Association of Independent Schools (AIS).

# Learning, Growing, Serving

Our vision for learning at Tyndale Christian School is that our students would be prepared and equipped for a life of service as disciples of Jesus Christ. Therefore, it is our desire that students would learn to be seekers of biblical truth; grow in their identity in Christ; and, as God's image bearers, serve with love, justice and compassion. This is at the heart of our Learner Profile.

We seek to promote engagement with learning where students are actively encouraged to become curious and tenacious learners and discerning and critical thinkers. Approaches to learning such as promoting questioning, researching, identifying connections and applying and transferring knowledge all assist students to deepen their understanding and move beyond the superficial.

It is also expected that, as students courageously take responsible risks in order to learn and develop the ability to creatively and collaboratively problem-solve, that they will grow and become people of character.

Lastly, with the intention that our students become intentional and empathetic contributors and faithful, servant-hearted global community members, opportunities are given to them to serve the Lord with gladness. In the context of learning, this looks like giving students the capacity to faithfully use their gifts and to envision themselves as being active participants to promote restoration in a wounded world.

In Primary, our teachers have been actively working to improve the quality of teaching, by prioritising explicit instruction in all aspects of literacy and numeracy. Explicit instruction has a strong and ongoing evidence base to support its effectiveness in teaching. In simple terms, explicit instruction involves a three step process:

1

Teachers model new skills and learning for the students

2

Teachers guide the student in applying the new skill or learning

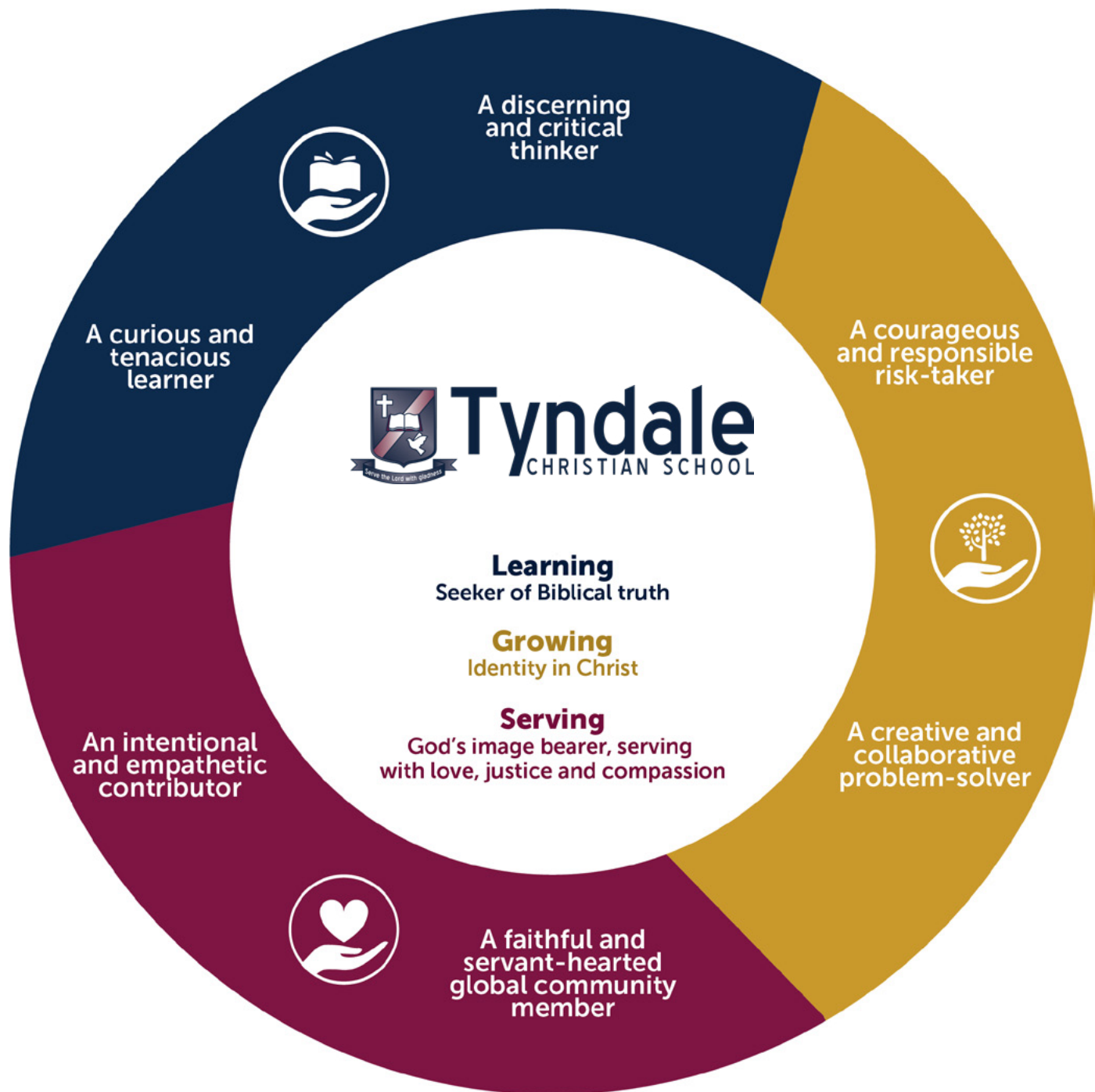
3

Independent practice of the new skill or learning

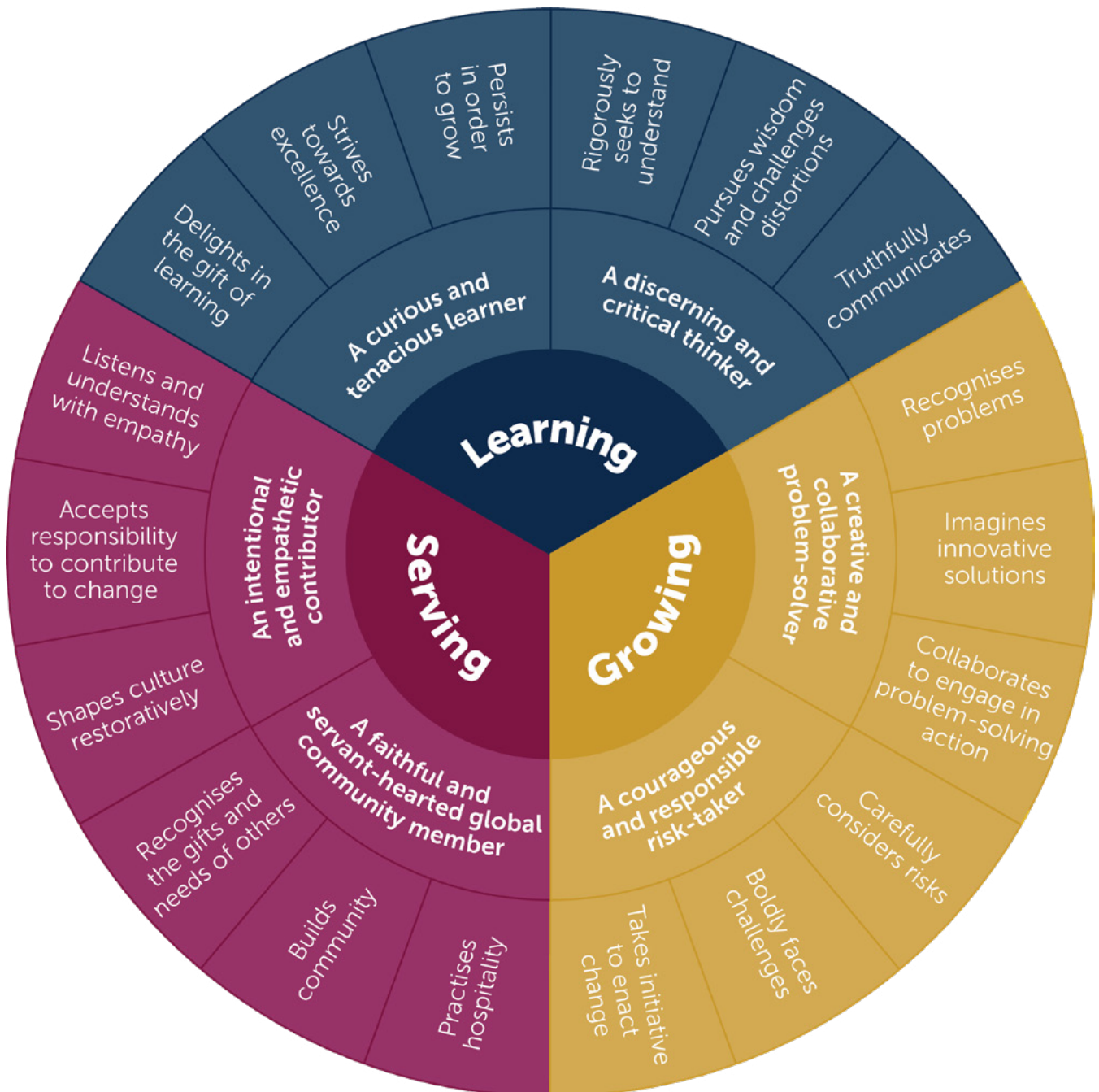
The assistance of the NSW Literacy and Numeracy Action Plan has been invaluable in honing our craft as teachers, and helping us to be insightful and instructional learners. Secondary teachers further the learning of students through explicitly teaching the New Pedagogies for Deep Learning competencies which are Character, Citizenship, Critical Thinking, Communication, Collaboration and Creativity. In teaching students how to learn and emphasising the process of learning, we are promoting a culture where students take ownership and responsibility for their learning and are able to make connections between what they are doing in the classroom and the real world.



# The Tyndale Learner Profile



# The Tyndale Teaching and Learning Framework





# What you can Expect as a Member of the Tyndale Team

The professional learning and well-being of each staff member is crucial to the success of the school. Staff are encouraged to pursue their passions, develop leadership skills and nurture their strengths. All new staff participate in our exciting induction program (FYAT) led by an experienced member of our staff. New staff are mentored as they begin their learning journey at Tyndale. The mentoring has a strong focus on equipping them to teach from a Christian perspective. All staff are provided with regular opportunities for training and pastoral care by their relevant Heads of School.

As a staff team we are committed to continuous improvement. Tyndale staff are actively engaged in many professional learning opportunities, participate in mentoring programs and develop goals aligned to the AITSL teaching standards and our Teaching and Learning Framework.

Proficient use of digital learning platforms provide an innovative teaching environment for our staff. The school is proud of its ability to quickly adapt to changing learning environments and continue to provide an interactive, meaningful learning experience for our staff and students.

Staff are employed under the NSW Christian Schools Teaching Staff Multi-Enterprise Agreement.

## What you can expect

As an organisation we are committed to the growth, wellbeing and job satisfaction of our staff. Some of the ways we achieve this include:

- Ongoing professional learning and mentoring
- Participation in Gallup Strengths Coaching
- Generous salary packaging options
- Free Employee Assistance Program
- Free annual flu vaccination

# Available Positions

## How to Apply

We hope that this resource has helped you to understand more about who we are and what we value. At Tyndale, we are all about equipping students to be disciples of Jesus through Christ-centred, Biblical education.

Whether you are interested in applying for any positions at Tyndale or simply wish to register your interest, we strongly encourage all who share this vision to visit the links below.



[www.tyndale.edu.au/about-us/employment-opportunities/](http://www.tyndale.edu.au/about-us/employment-opportunities/)

Submit an Employment Application form to:



[employment@tyndale.edu.au](mailto:employment@tyndale.edu.au)







02 8811 7800



office@tyndale.edu.au



58 Douglas Road, Blacktown, NSW 2148